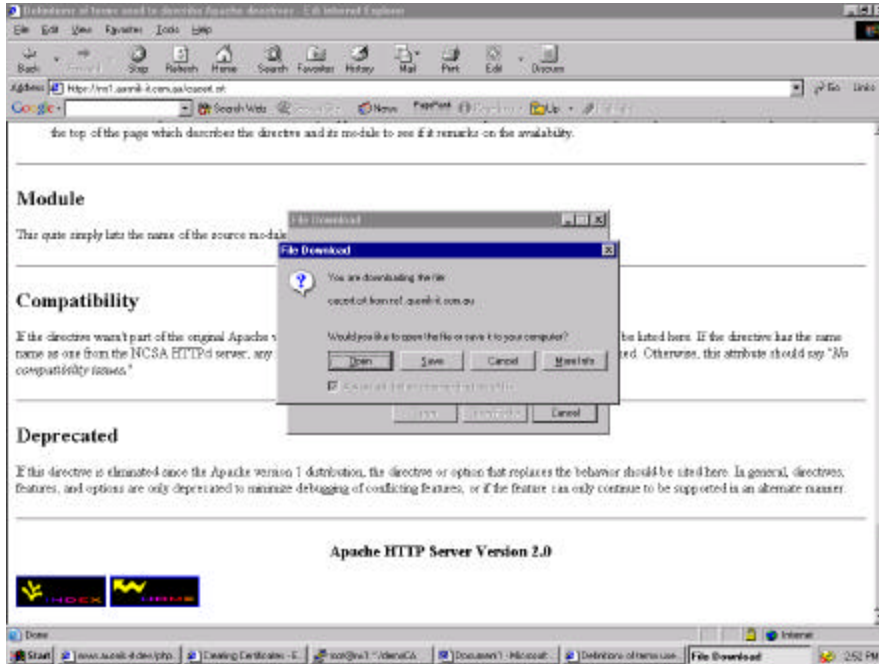
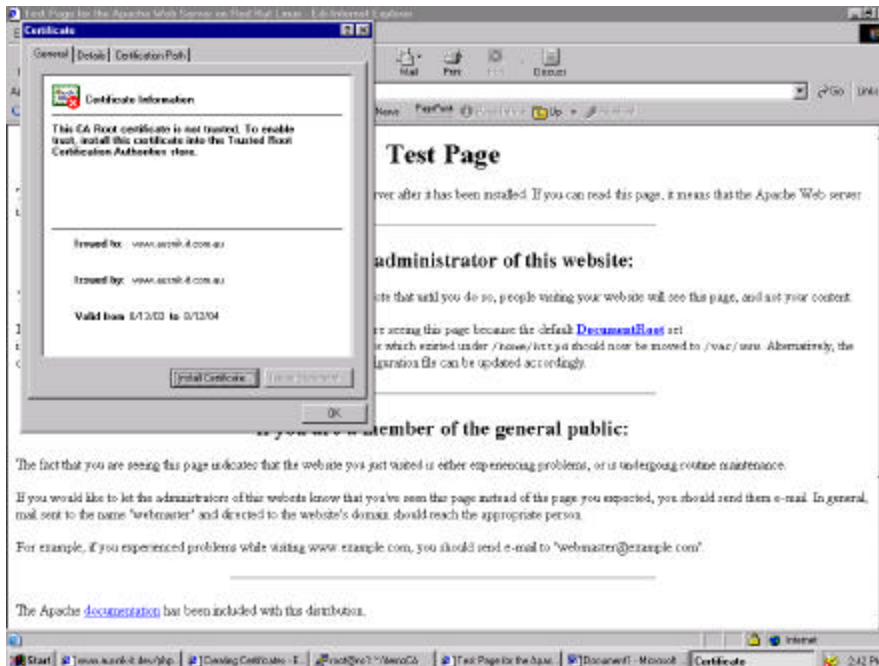


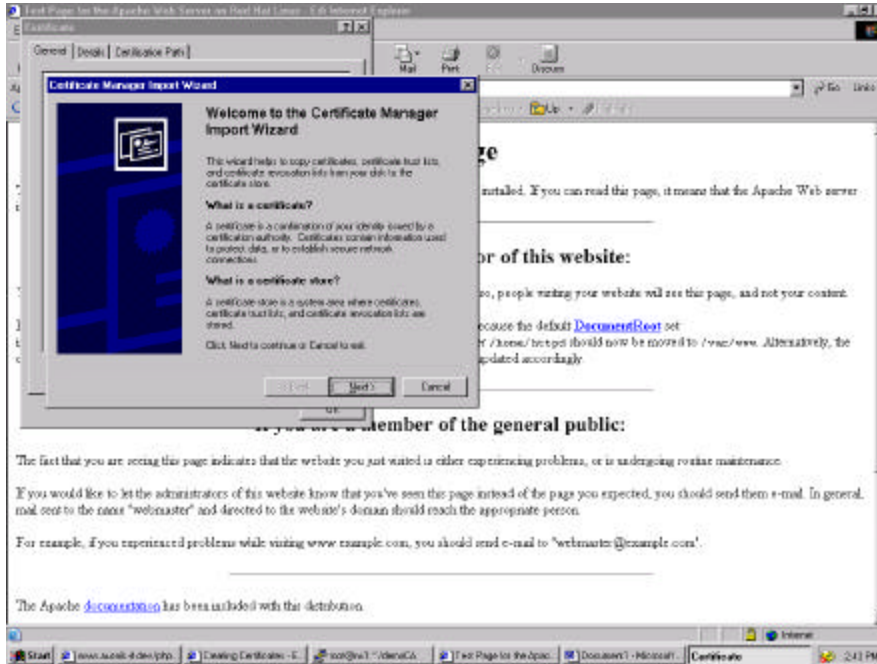
1. Go to <http://www.ausnik-it.com/ca.crt> and click “Open” button



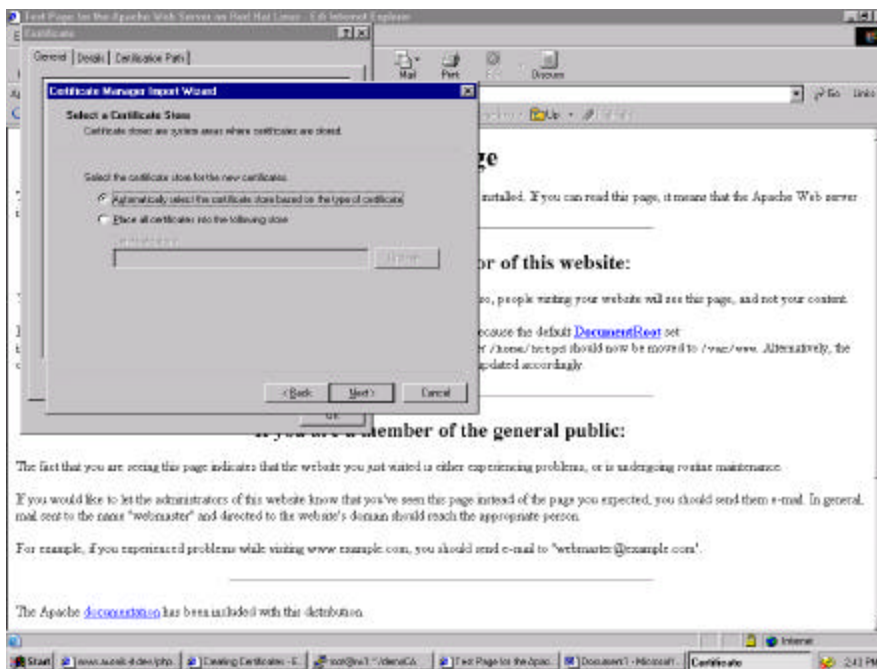
2. Click “Install Certificate” button on the certificate dialog



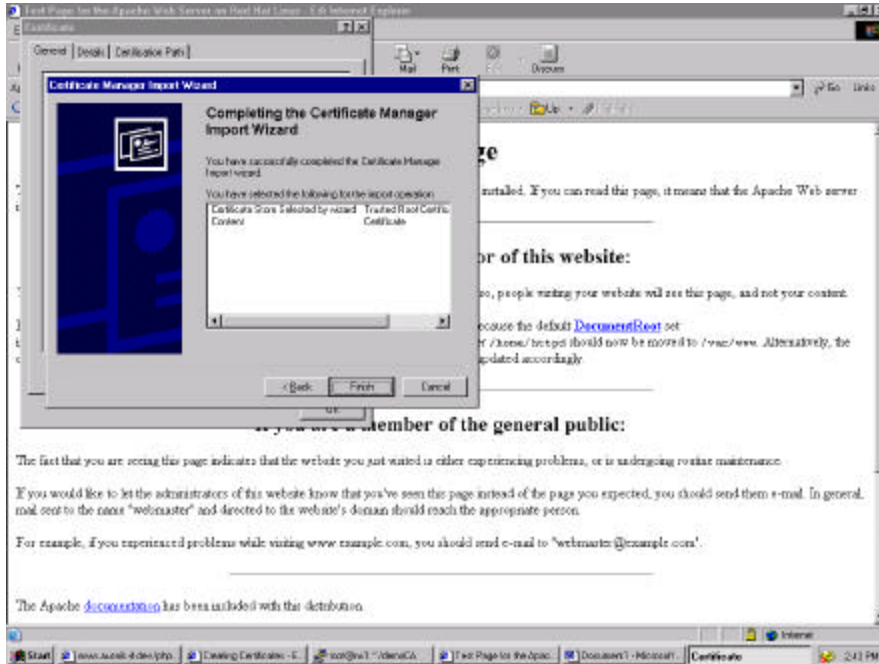
3. Click “Next>” button on the Certificate Manager Import Wizard



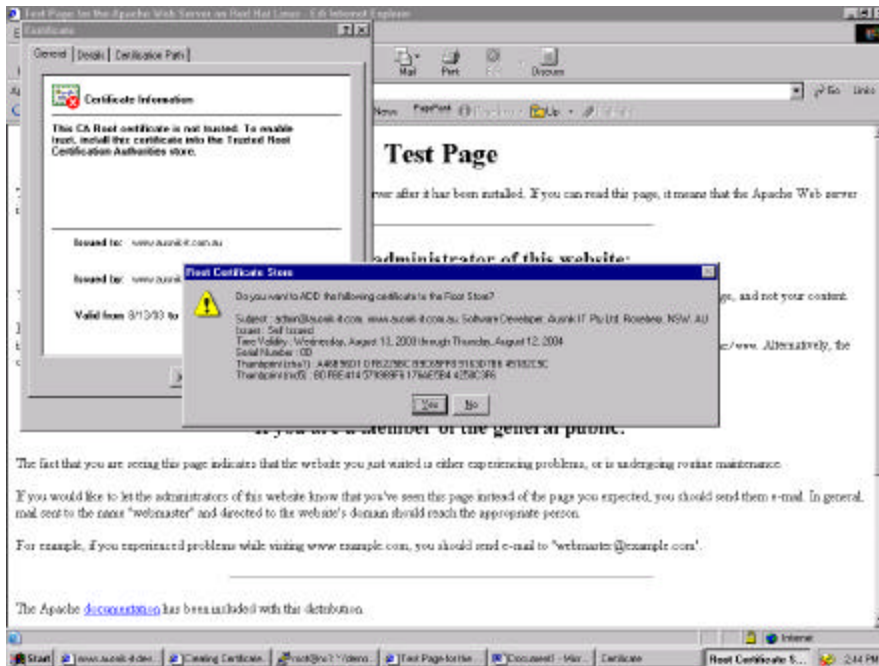
4. Choose “Automatically select...”



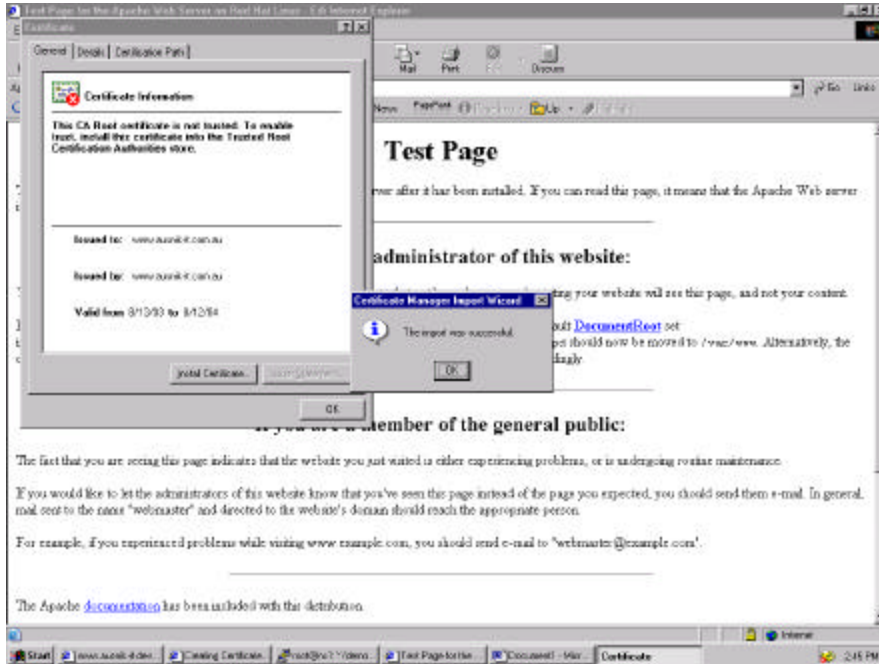
5. Click “Finish”



6. Click “Yes” on the Root Certificate Store message box



7. Click “OK”



8. Click “OK”

